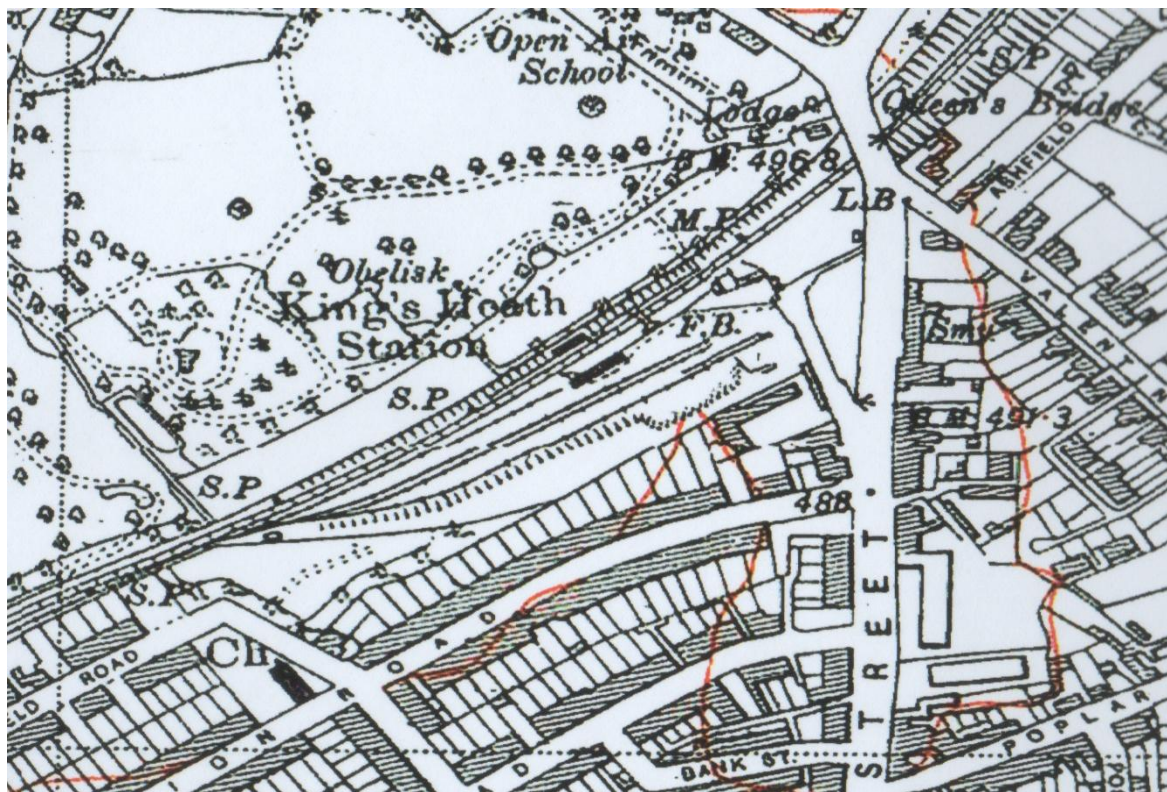


## Old Railway Stations in the King's Heath Area

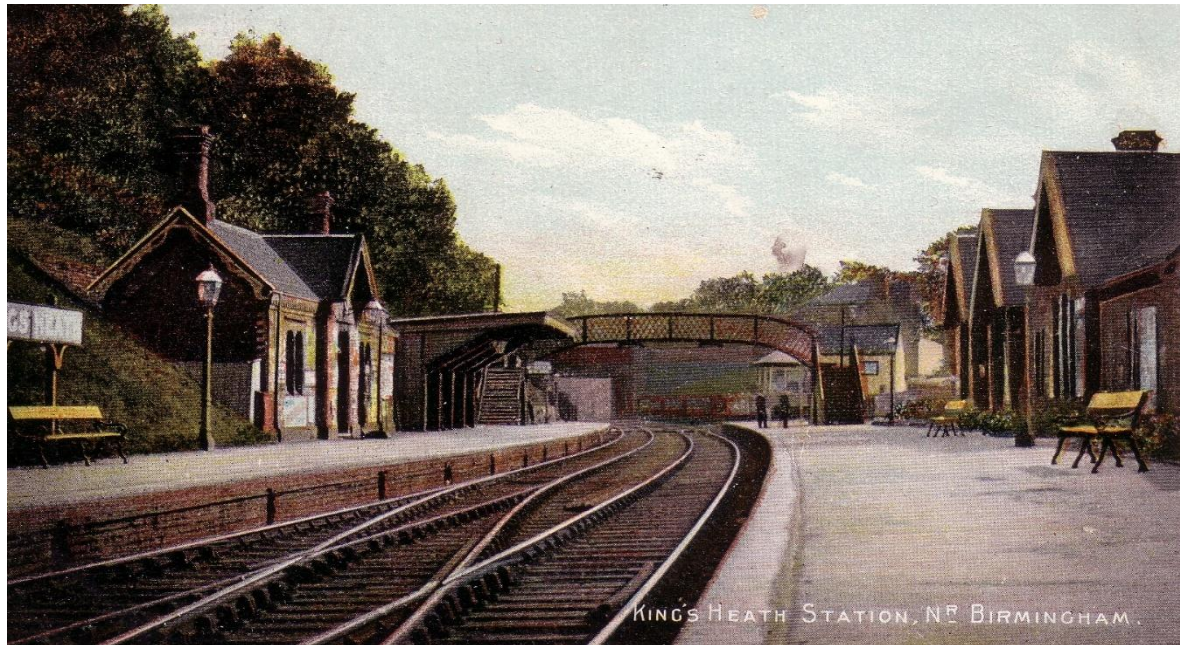
### King's Heath Station

With the new railway stations shortly to be completed, hopefully, I thought it would be nice to take a look at the old ones they are replacing. King's Heath Station first opened in 1840 but was called Moseley Station, being on the border of King's Heath and Moseley. It was renamed King's Heath Station in 1886 and closed to passengers in 1941 but carried on as a goods/coal station into the 1960s.



*King's Heath Station just before it closed to passengers in 1941.*





*King's Heath Station as it looked in the 19<sup>th</sup> century looking towards the Queens Bridge road bridge.*



*Another view of the station in the 19<sup>th</sup> century*





*The waiting room on the Birmingham City side of the station in the Victorian or Edwardian periods.*



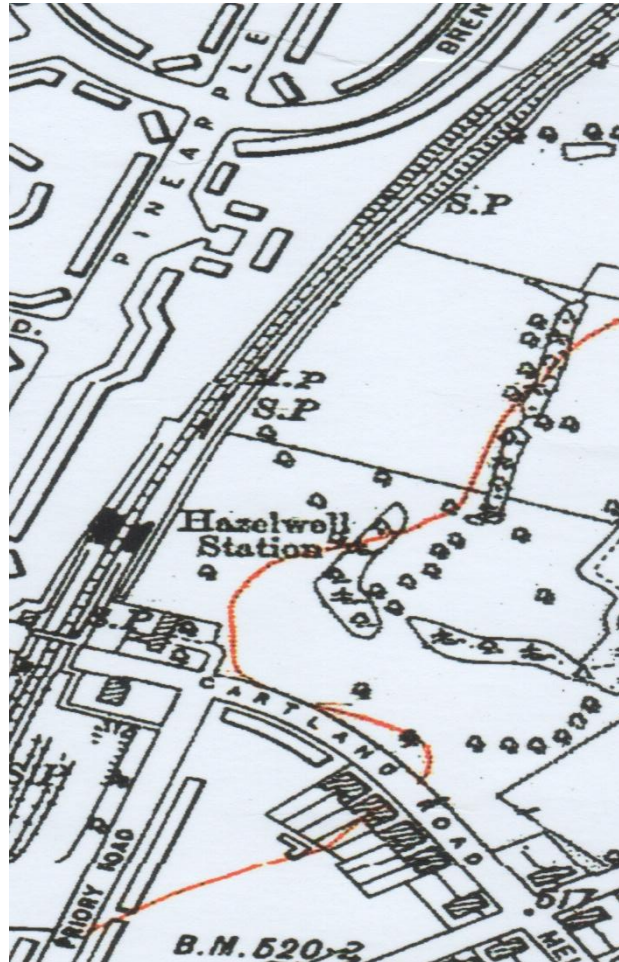
*The signal box with the bottom of King's Heath High Street in the view behind it.*



*The coal merchants offices adjacent to the King's Heath Station but by the look of the picture building materials are also being delivered to the station. The author J.R.R Tolkien (The Lord of the Rings) who lived in Westfield Road for a time in the early 20th century discovered the Welsh language from the colliery names on the coal wagons in the station yard.*

## Hazelwell Station

Hazelwell Station opened in 1903, at the time there was a level-crossing and foot bridge on Cartland Road next to the station, it closed to passengers in 1941. The new station will be called Pineapple Road Station.



*Hazelwell station in 1938*





*Hazelwell station shortly after it opened in 1903 (judging by the boys clothes on the left platform) looking towards Birmingham city center.*



*Hazelwell station viewed from Cartland Road.*



*An artists view of the new King's Heath Station looking towards Queens Bridge road bridge, the two towers are lifts to enable disabled access to the platforms.*

Bob Blackham 2025